

CELEBRATING SEATTLE FOR 40 YEARS

THE ULTIMATE DINING GUIDE

seattle

THE PREMIER SEATTLE MONTHLY

APRIL 2006

THE BEST Restaurants

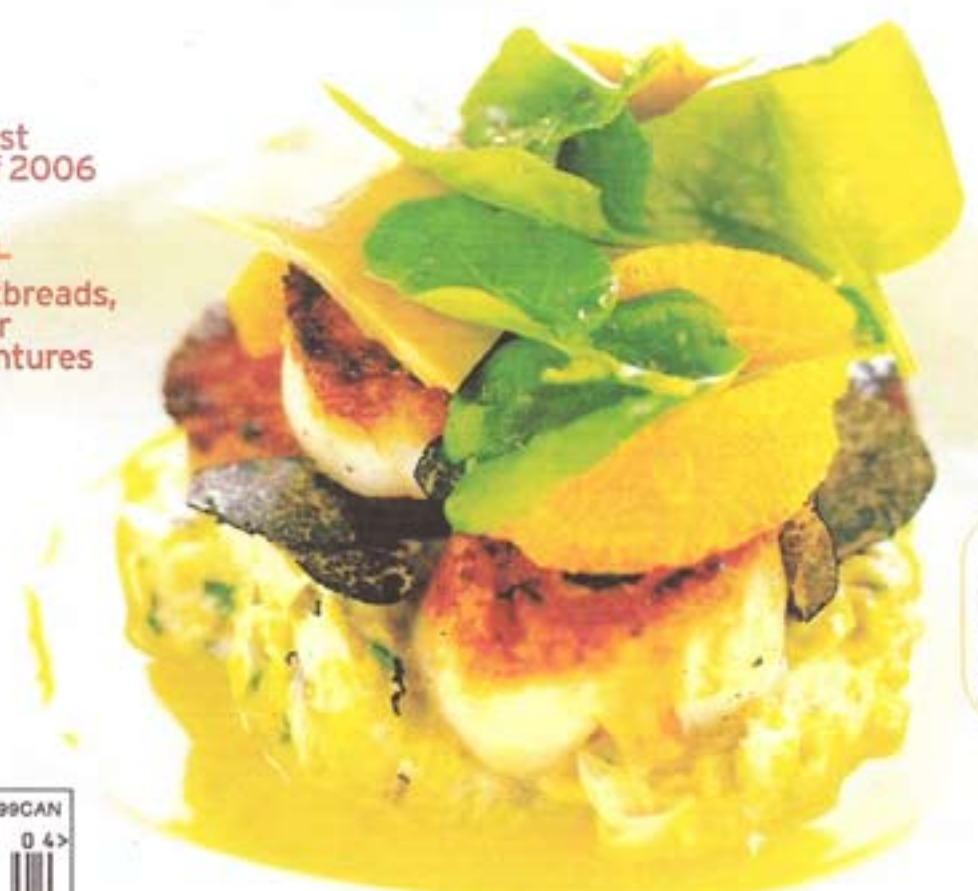
124 GREAT EATS, FROM HOUSE-MADE PASTA AND THE PERFECT DINNER SALAD TO CREPES AND THE FRESHEST SUSHI

Plus:
The 10 Very Best Restaurants of 2006

THE YEAR OF THE COCKTAIL

Congee, Sweetbreads, Goat and Other Culinary Adventures

IS IT SAFE TO GO OUT AT NIGHT? Our inside look at the new wave of nightclub violence



OUR FIRST ANNUAL WASHINGTON WINE AWARDS: Wine of the Year, Best Bottle Under \$15 and More (p.76)

\$3.99US \$4.99CAN



HOW GREEN ARE WE? A GUIDE TO SUSTAINABILITY

FRESH SPRING FASHION: CHIC SHORTS, FEMININE DESIGNS AND COLORS ARE BACK

ROAD TOLL: WILL TOLLS REALLY SOLVE OUR TRAFFIC MESS?

Gifts)

At Fremont's **Portage Bay Goods** (706 N 34th St.; 206.547.5221; portagebaygoods.com), many gifts are made from reused or recycled materials. Standouts include notebooks, card cases, clipboards and luggage tags made from recycled circuit boards from Motherboard Enterprises (\$6-\$25). Resource Revival's bicycle parts reborn as picture frames (\$12-\$96) and bottle openers (\$30) and Vy & Elle bags (\$7-\$150), made from recycled pieces of vinyl billboards.

Home)

At retail showroom **Ambiente Tile** (227 NE 65th St.; 206.524.2113; ambiente.tile.com) check out countertop-ready Icestone, a material made of 75 percent postconsumer recycled glass and concrete (\$41.40-\$61.70 per square foot), and Oceanside Glasstile (\$30.10-\$40.10 per square foot), made from up to 85 percent postindustrial recycled glass. ■ The **Environmental Home Center** (4121 First Ave. S; 206.682.7332; environmentalhomecenter.com) is the



6.

Urban Hardwoods' beautiful Inverted Log Desk is made from felled urban trees. Greener Lifestyles' Ham Chair is 100 percent fair-trade. Portage Bay's recycled glass plates: funky and sustainable. RE Store's lockers were repurposed from Mount Rainier High. Teragren's bamboo-beating island. Bamboo floors. Bootyland carries organic cotton baby clothes. Greener Lifestyles' hand-coiled bamboo. Ambiente Tile's Oceanside tile is made from up to 85 percent industrial recycled glass.



7.



eco-equivalent of the big-box home supply store. Gather basics and more, including nonvinyl shower curtains (\$26.95-\$35.49), arsenic-free lumber (\$1.90 per square foot), nontoxic paint (\$23.99 a gallon) and radiation-free smoke detectors (\$26.99-\$49.99). The store also stocks an extensive collection of all-natural cleaners. ■ **Greener Lifestyles** (5317 Ballard Ave. NW; 206.545.4405; greenerlifestyles.com) carries 100 percent natural fair-trade sofas, coffee tables, rugs, benches, sconces, bedding and kitchenware. The Hect Chair, made from Forest Stewardship Council-certified wood with a natural rubber latex seat and 100 percent cotton fabric (\$650), and hand-coiled bamboo kitchenware (\$10-\$40) demonstrate how beautiful green design can be. ■ The **RE Store** (1440 NW 52nd St.; 206.297.9119; re-store.org) is chock-full of salvaged building and home supplies. Look for building basics such as beams (\$5-\$20 per lineal foot), doors (\$1-\$100) and mirrors (\$10-\$175), and conversation starters such as Mount Rainier High lockers (\$100-\$150), University of Washington chemistry lab countertops (\$3 per square foot) and even bowling alley sections (\$8 per square foot). ■ Employees from **Second Use Building Materials** (7953 Second Ave. S; 206.763.6929; seconduse.com) scour construction sites and homes to salvage building materials. Find one-of-a-kind vintage finds such as antique lights (\$50-\$1,000), bath fixtures (\$14-



\$1,500), hardware, stained glass (\$100-\$2,000) and more. Bainbridge Island's **Teragren** (206.842.9477; teragren.com) makes bamboo flooring and other home components. Bamboo's astonishing regrowth rate puts it on the sustainable supplies map, but Teragren goes a step further, using as little formaldehyde as possible during its manufacturing process. Retail outlets for the company's bamboo flooring, panels and veneer include Bainbridge Floor Covering (156 Winslow Way E, Bainbridge Island; 206.842.4717), Abbey Carpet of Factoria (12402 SE 38th St., Bellevue; 425.746.3295) and Pitcher Brothers (5034 University Way NE; 206.522.4611; pitcherbrothers.com). ■ Jim Newsom's habit of salvaging beached logs from Elliott Bay eventually grew into **Urban Hardwoods** (5021 Colorado Ave. S; 206.766.8199; urbanhardwoods.com). The company's mission—to craft furniture from reclaimed felled urban trees—means you can furnish your home with a black torched-fir Douglas Bench or an Inverted Log Desk, whose maple surface perches atop birch legs, beautiful silver bark intact.

Office)

If you feel guilty about the supplies your office consumes, the **Sustainable Group** (844 NW 49th St.; 206.706.0966; sustainablegroup.net) can help. Its binders (case of 16 one-inch binders, \$63.20) and folders (case of 75, \$44.99), available online and at Queen Anne Office Supply (524 First Ave. N; 206.284.0760), are made from recycled fibers and are completely recyclable.